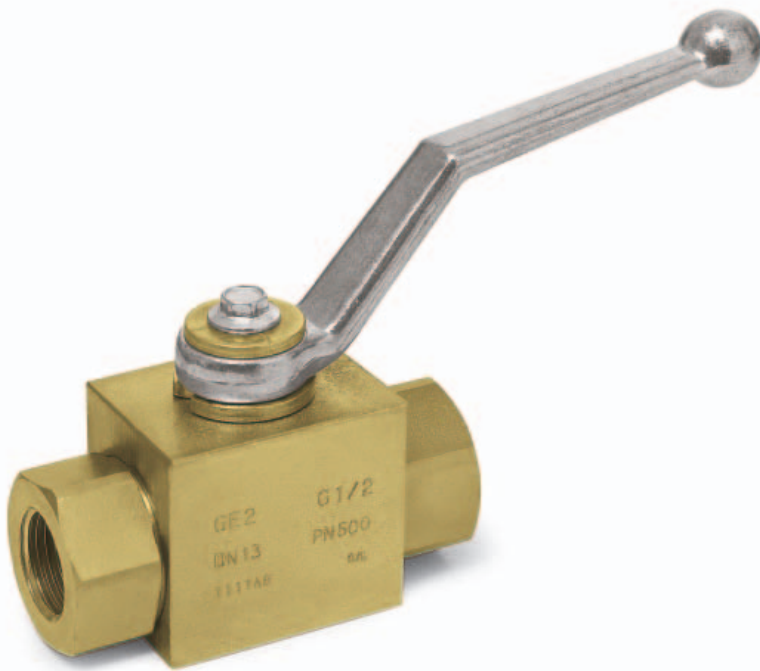


2-WAY HIGH PRESSURE BALL VALVES

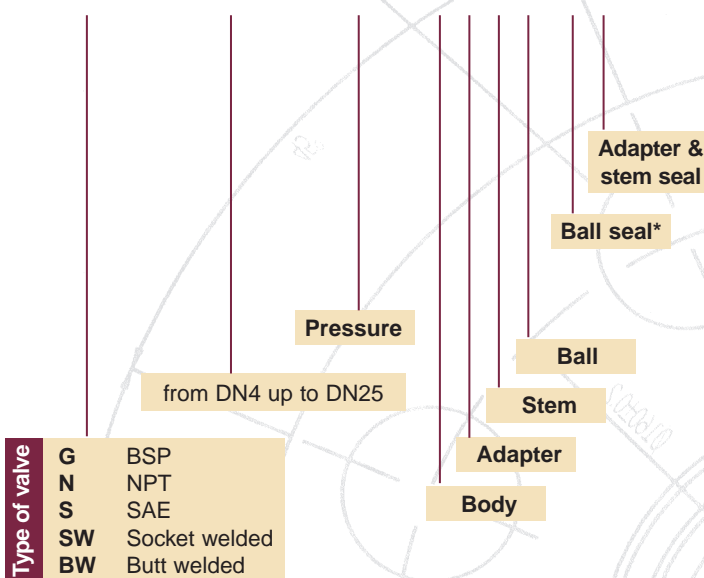


SPECIFICATIONS

• Type	ball valve GE 2way
• Body	block
• Material	AISI 12L14
• Size	from DN4 up to DN25
• O-Rings	NBR, FPM, MQV, EPDM, FFKM
• Operating pressure	500 Bar depending on valve size and seal materials selected
• Temp range	-10°C to +100°C depending on seal material selected

MODEL CODE

GE2 G 1/2 DN13 PN500 1 1 1 1 A B



MATERIAL CLASSIFICATION

N.	DIN	W.Nr	AISI	ASTM
1	9 SMn Pb 36	1.0737	12L14	-
2	St 52-3	1.0570	-	A105
3	X12 CrNiS 18 8	1.4305	303	-
4	X2 CrNiMo 18 12	1.4435	316L	-
5	X20 Cr 13	1.4021	420	-
6	X5 CrNi 18 9	1.4301	304	-

SEAL CLASSIFICATION

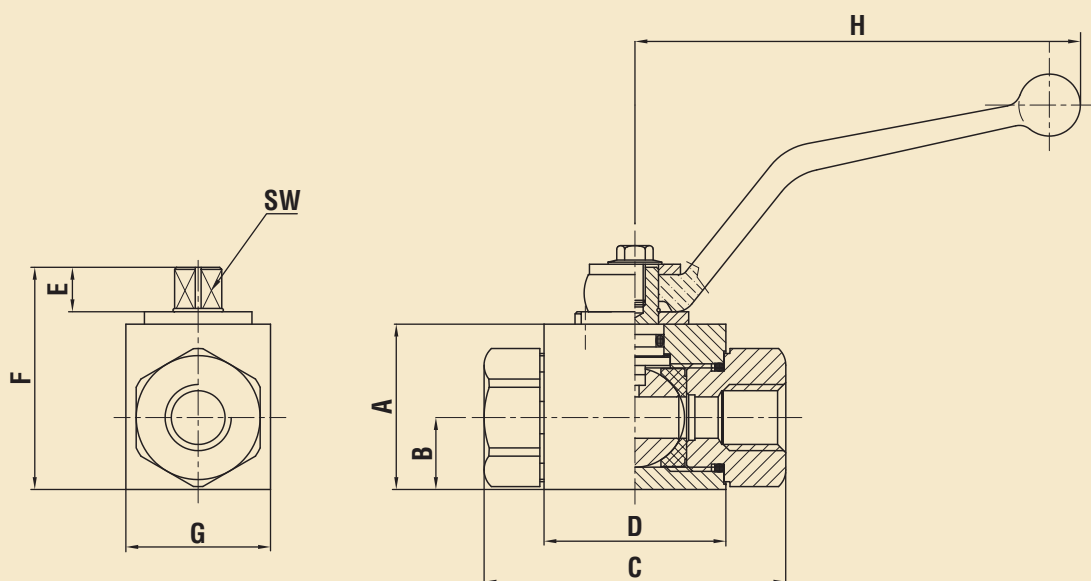
A	POM	G	PA 612
B	NBR70 (BUNA)	K	GEMPTFE
C	RPTFE	H	PCTFE
D	PEEK	I	KARLEZ®
E	FKM	L	MVQ (silicon)
F	EPDM	M	Metal to Metal

*For the complete list of plastic material compatibility see pp. 40.6

GE2 PN 500

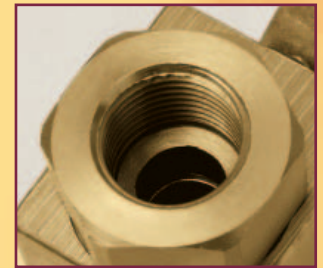
2-WAY HIGH PRESSURE BALL VALVES

TECHNICAL DRAWING

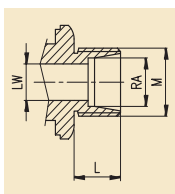


	TYPE	PN	DN	A	B	C	D	E	F	G	H	L	M	SW	LW	Kg	Item Code
	GE2 G 1/8	500 bar	4	35	14	71	42	11	49	30	110	11	G 1/8	9	4	0.50	GE2GGT05011A000
	GE2 G 1/4	500 bar	6	35	14	71	42	11	49	30	110	16	G 1/4	9	6	0.50	GE2GGT15011A000
	GE2 G 3/8	500 bar	10	40	17	73	44	11	54	35	110	16	G 3/8	9	10	0.65	GE2GGT25011A000
	GE2 G 1/2	500 bar	13	43	18	83	48	11	57	37	110	17	G 1/2	9	13	0.75	GE2GGT35011A000
	GE2 G 3/4	400 bar	20	55	23	95	63	13	73	45	180	21	G 3/4	14	20	1.40	GE2GGT44011A000
	GE2 G 1"	350 bar	25	65	29	112	67	13	83	55	180	24	G 1"	14	25	2.20	GE2GGT53011A000
	GE2 G 1 1/4	350 bar	25	65	29	120	67	13	83	55	180	24	G 1 1/4	14	25	2.25	GE2GGT63021A000
	GE2 G 1 1/2	350 bar	25	65	29	124	67	13	83	55	180	24	G 1 1/2	14	25	2.35	GE2GGT73021A000

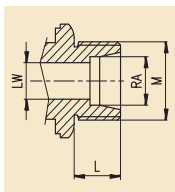
	TYPE	PN	DN	A	B	C	D	E	F	G	H	L	M	SW	LW	Kg	Item Code
	GE2 N 1/8	7250 psi	4	35	14	71	42	11	49	30	110	11	N 1/8	9	6	0.50	GE2NNT05011A000
	GE2 N 1/4	7250 psi	6	35	14	71	42	11	49	30	110	16	N 1/4	9	6	0.50	GE2NNT15011A000
	GE2 N 3/8	7250 psi	10	40	17	73	44	11	54	35	110	16	N 3/8	9	10	0.65	GE2NNT25011A000
	GE2 N 1/2	7250 psi	13	43	18	83	48	11	57	37	110	17	N 1/2	9	13	0.75	GE2NNT35011A000
	GE2 N 3/4	5800 psi	20	55	23	95	63	13	73	45	180	21	N 3/4	14	20	1.40	GE2NNT44011A000
	GE2 N 1"	5075 psi	25	65	29	112	67	13	83	55	180	24	N 1"	14	25	2.20	GE2NNT53011A000
	GE2 N 1 1/4	5075 psi	25	65	29	120	67	13	83	55	180	24	N 1 1/4	14	25	2.25	GE2NNT63021A000
	GE2 N 1 1/2	5075 psi	25	65	29	124	67	13	83	55	180	24	N 1 1/2	14	25	2.35	GE2NNT73021A000



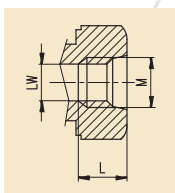
DIN 2353 LIGHT SERIES



TYPE	PN	DN	A	B	C	D	E	F	G	H	L	M	SW	RA	Kg	Item Code
GE2 6L	500 bar	6	35	14	76	42	11	49	30	110	10	12X1.5	9	6	0.50	GEDDL05011A000
GE2 8L	500 bar	6	35	14	76	42	11	49	30	110	10	14X1.5	9	8	0.50	GEDDL15011A000
GE2 10L	500 bar	6	35	14	76	42	11	49	30	110	11	16X1.5	9	10	0.50	GEDDL5011A000
GE2 10L	500 bar	10	40	17	76	44	11	54	35	110	11	16X1.5	9	10	0.65	GEDDL25011A000
GE2 12L	500 bar	10	40	17	79	44	11	54	35	110	11	18X1.5	9	12	0.65	GEDDL35011A000
GE2 15L	500 bar	13	43	18	87	48	11	57	37	110	12	22X1.5	9	15	0.75	GEDDL45011A000
GE2 18L	500 bar	13	43	18	87	48	11	57	37	110	12	26X1.5	9	18	0.75	GEDDL55011A000
GE2 22L	500 bar	20	55	23	110	63	13	73	45	180	14	30X2	14	22	1.40	GEDDL64011A000
GE2 28L	350 bar	25	65	29	115	67	13	83	55	180	14	36X2	14	28	2.20	GEDDL73011A000
GE2 35L	350 bar	25	65	29	119	67	13	83	55	180	16	45X2	14	35	2.15	GEDDL83011A000
GE2 42L	350 bar	25	65	29	120	67	13	83	55	180	16	52X2	14	42	2.15	GEDDL93011A000



TYPE	PN	DN	A	B	C	D	E	F	G	H	L	M	SW	RA	Kg	Item Code
GE2 8S	500 bar	4	35	14	76	42	11	49	30	110	11	16X1.5	9	8	0.50	GE2DDS05011A000
GE2 10S	500 bar	6	35	14	76	42	11	49	30	110	12	18X1.5	9	10	0.50	GE2DDS15011A000
GE2 12S	500 bar	8	35	14	76	42	11	49	30	110	12	20X1.5	9	12	0.50	GE2DDRS5011A000
GE2 12S	500 bar	10	40	17	76	44	11	54	35	110	12	20X1.5	9	12	0.65	GE2DDS25011A000
GE2 14S	500 bar	10	40	17	83	44	11	54	35	110	14	22X1.5	9	14	0.65	GE2DDS35011A000
GE2 16S	500 bar	13	43	18	89	48	11	57	37	110	14	24X1.5	9	16	0.75	GE2DDS45011A000
GE2 20S	500 bar	13	43	18	93	48	11	57	37	110	16	30X2	9	20	0.75	GE2DDS55011A000
GE2 25S	400 bar	20	55	23	110	63	13	73	45	180	18	36X2	14	25	1.40	GE2DDS64011A000
GE2 30S	350 bar	25	65	29	120	67	13	83	55	180	20	42X2	14	30	2.20	GE2DDS73011A000
GE2 38S	350 bar	25	65	29	131.5	67	13	83	55	180	22	52X2	14	38	2.15	GE2DDS83011A000



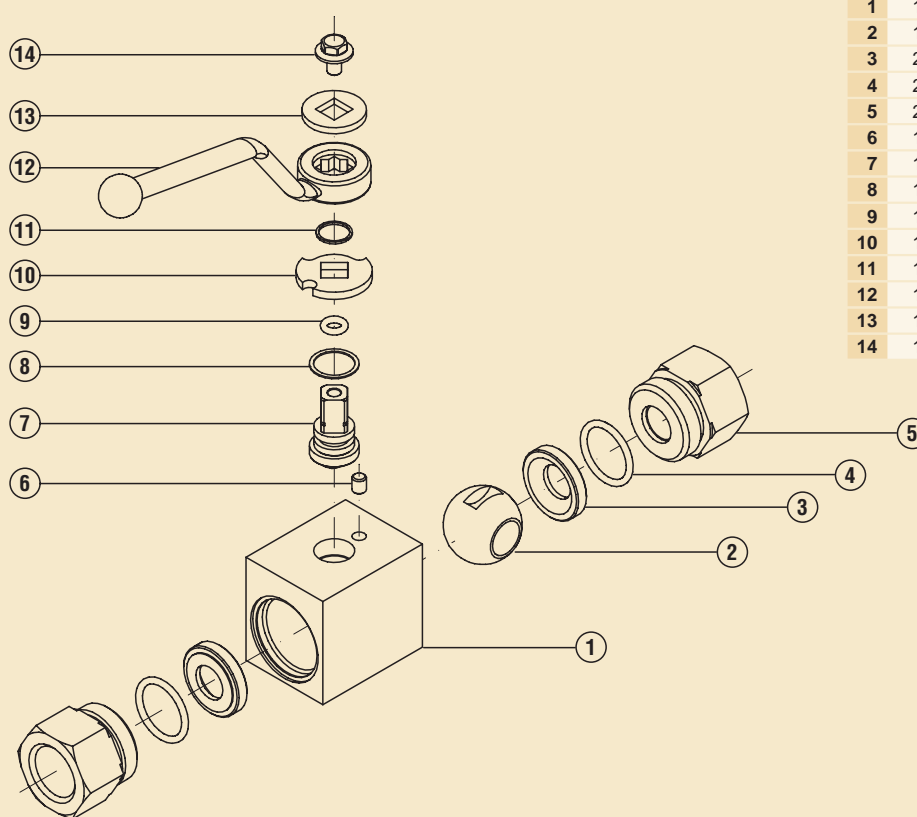
TYPE	PN	DN	A	B	C	D	E	F	G	H	L	M	SW	LW	Kg	Item Code
GE2 SAE 4	7250 psi	6	35	14	70	42	11	49	30	110	16	SAE 4	9	6	0.50	GE2EEE05011A000
GE2 SAE 6	7250 psi	10	40	17	73	44	11	54	35	110	16	SAE 6	9	10	0.65	GE2EEE15011A000
GE2 SAE 8	7250 psi	13	43	18	83	48	11	57	37	110	17	SAE 8	9	13	0.75	GE2EEE25011A000
GE2 SAE 12	5800 psi	20	55	23	95	63	13	73	45	180	22	SAE 12	14	20	1.40	GE2EEE34011A000
GE2 SAE 16	5075 psi	25	65	29	113	67	13	83	55	180	24	SAE 16	14	25	2.20	GE2EEE43011A000
GE2 SAE 20	5075 psi	25	65	29	120	67	13	83	55	180	24	SAE 20	14	25	2.25	GE2EEE53021A000
GE2 SAE 24	5075 psi	25	65	29	124	67	13	83	55	180	24	SAE 24	14	25	2.35	GE2EEE63021A000

"The company reserves the right to operate dimensional changes without prior notice".

GE2 PN 500

2-WAY HIGH PRESSURE BALL VALVES

EXPLODED DRAWING



1	1	Body 1/2 GE	Fe42/A105
2	1	Ball 1/2 GE	1.0737
3	2	Seal ball 1/2 GE	POM
4	2	O-ring	NBR
5	2	Adapter 1/2 Gas GE	1.0737
6	1	Spine	1.0737
7	1	Stem 1/2 GE	1.0737
8	1	Seal-stem	POM
9	1	O-ring	NBR
10	1	Washer	Fe37
11	1	Seeger	UNI 3545
12	1	Handle SW9 GE	ZAMA
13	1	Washer	Fe37
14	1	Screw	1.0737

MAXIMUM AND MINIMUM ADMISSIBLE WORKING TEMPERATURES FOR SEAL

Material	Min (°C)	Max (°C)
POM	-30	+100
NBR	-30	+100
RPTFE	-220	+230
PEEK	-50	+250
VITON	-25	+200
EPDM	-50	+150
PA612	-45	+145
GEMPTFE	-220	+230
HNBR	-40	+150

0-C

CAPACITY COEFFICIENT

Test with water at 20°C		
DN FB	Cv / G.P.M.	Kv / m³h
6	5	4.27
10	7	6
13	35	30.2
20	61	53.7
25	105	90.66
32	210	179.5
40	285	245.2
50	425	364.52
65	750	645.4
80	1038	889.5
100	NR	NR

ON REQUEST

- Reduced bore
- O-Ring in EPDM, FFKM, MQV
- Seals in POM, PEEK, PA 612, RPTFE, GEMPTFE
- Special Threads
- Body in AISI 316L
- Ball in AISI 316
- Pressure Class PN 100 to PN 500
- Actuator
- Security block
- Locking device

• For further special requests please consult our technical/commercial service