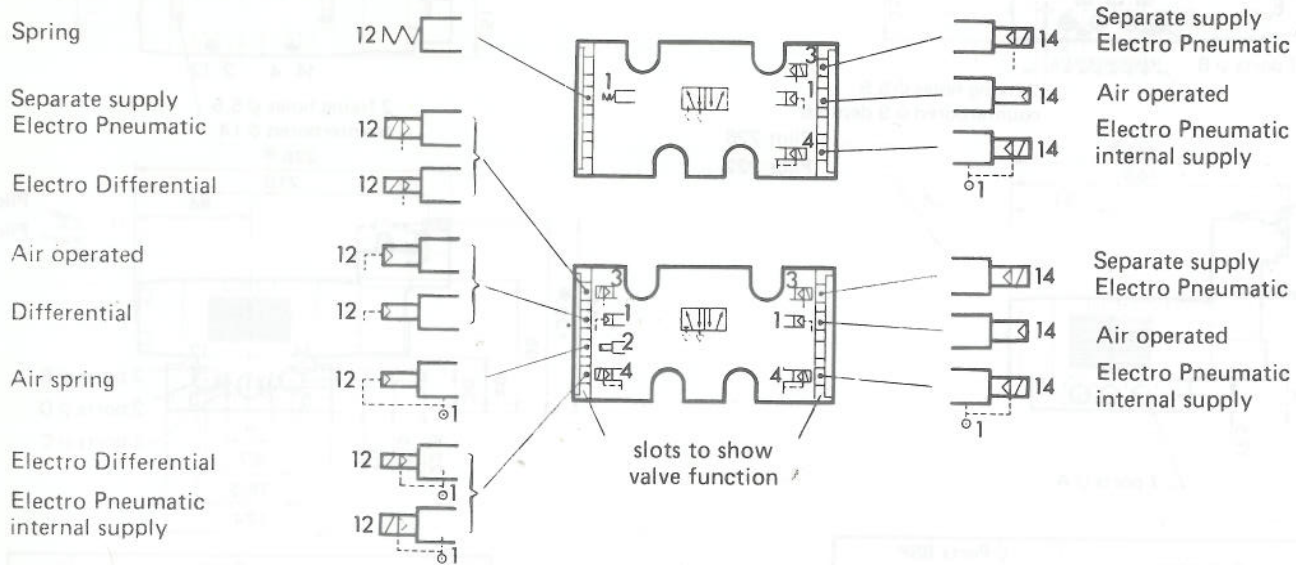


## EXPLANATION OF MULTI-FUNCTION VALVES

The valve function can be changed on site from air operated to solenoid operated. A double air or double solenoid valve can be changed to air spring return. In addition a manual override can be fitted on site to air operated valves.

### PILOTS

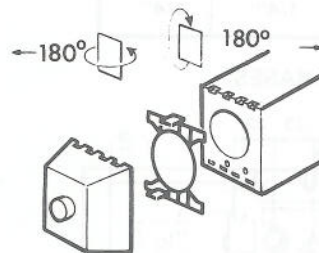


### • SELECTOR

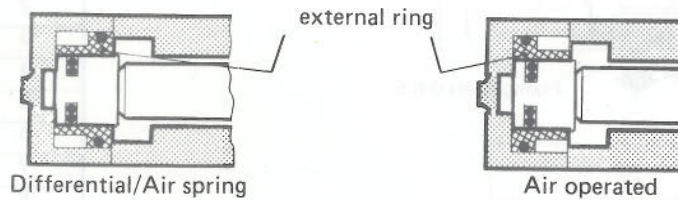
Turning or turning over the selector seal allows:

- either external or internal supply to the pilot
- either solenoid or air operated use

The indicator tag has to be moved to the function required

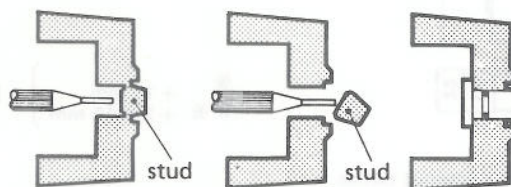


- Change from air operated to differential or air spring. The external ring on the split piston is changed as shown below.



- A manual override can be fitted by knocking out the "knock out"

This only applies to air operated valves



- Solenoid valves can be changed to air operated by:
  - 1-Removing the solenoid pilot
  - 2-Adding a manual override
  - 3-Changing the selector seal