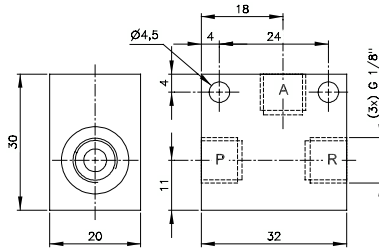
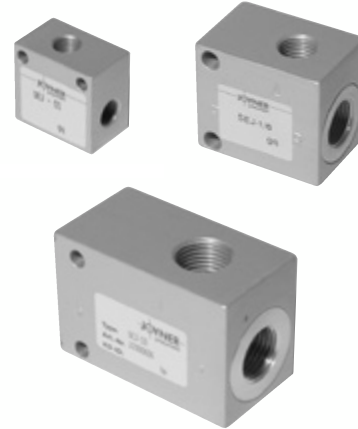
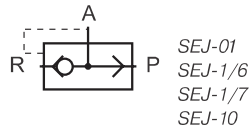


# SEJ-01 / SEJ-1/6 / SEJ-1/7 / SEJ-10



SEJ-01

Quick exhaust valves are used to increase the speed of the piston in a single- or double acting cylinder.

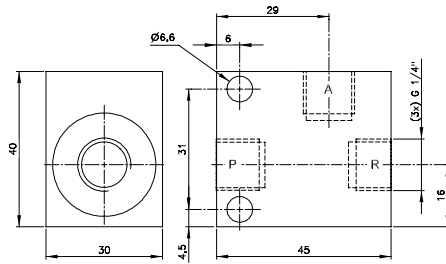
Temperature range: -20°C ... +80°C

Valve can also be used as a non-return valve. For this application close port R.

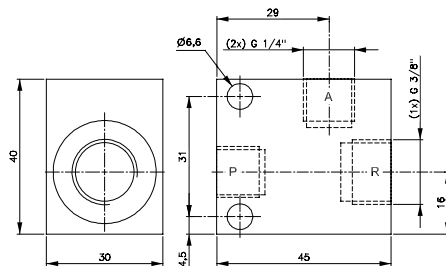
Valve can also be used as an OR-gate. Please use P and R as in-ports. A is exhaust.

Available on request:

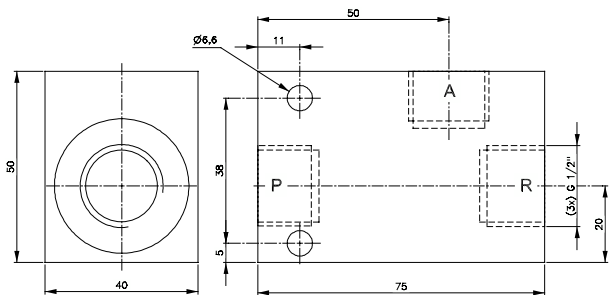
- Low temperature valves
- Valves made from stainless steel 1.4571



SEJ-1/7



SEJ-1/6



SEJ-10

Type	Ports		Air flow	Operation pressure	Differential pressure to connect P with A and R	Weight
	A + P	R				
SEJ-01	G 1/8"	G 1/8"	560 l/min	0.3 - 10 bar	1.3 bar	0.06 kg
SEJ-1/7	G 1/4"	G 1/4"	1200 l/min	0.2 - 10 bar	1.5 bar	0.18 kg
SEJ-1/6	G 1/4"	G 3/8"	1200 l/min	0.2 - 10 bar	1.5 bar	0.18 kg
SEJ 10	G 1/2"	G 1/2"	3600 l/min	0.5 - 10 bar	1.2 bar	0.26 kg

