

Magnetic switch type M130-K..

Application and function

The magnetic switch functions as controller or limiter in float switches.

At operation with inductive charges (e.g. contactor coil), we suggest to switch a varistor (e. g. 0,1 mF/100 Ohm), adapted to the operating voltage, in parallel with the contact.

Use acetic acid-free silicon cable in the internal part of switch housing.

The magnetic switch may not be opened.
Each warranty claim expires if the test seal is damaged.



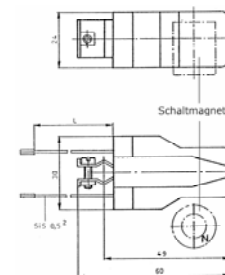
Technical data

Kind of contact	bistabil
Contacts	1 breaker / 1 maker
Connection wire	1 x 0,5 mm ² (16 x ø 0,2) Cu tinned / Silicon
Wire length L	200 mm
Allowable ambient temperature	-70° C bis +120° C
Protection	IP68

Type	Switching voltage U	Switching current I	Maximum power U x I
M130-K	≤ 250 Vac	≤ 1 A	≤ 150 VA

Type	Switching voltage U	Switching current I	Maximum power U x I
M130-KS	≥ 24 Vac/dc	≥ 0,065 A	≥ 1,05 VA
	≤ 24 Vdc	≤ 0,6 A	≤ 15 VA
M130-KG	≤ 24 Vdc	≤ 0,008 A	≤ 0,12 VA

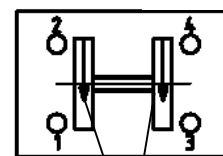
Type	Article no.	Contact material
M130-K	15-01122	Silver-palladium AgPd 70/30 massiv
M130-KS	15-05769	Silver-palladium AgPd 70/30 massiv
M130-KG	15-01197	Silver-palladium AgPd 70/30 massiv, hard-gold plated AuCo 4-6µm



Assembly

Contact wires are marked with 1 – 4 on base

brown yellow



white green

Arrow must show downwards

Contact position

Primary magnet is below secondary magnet

