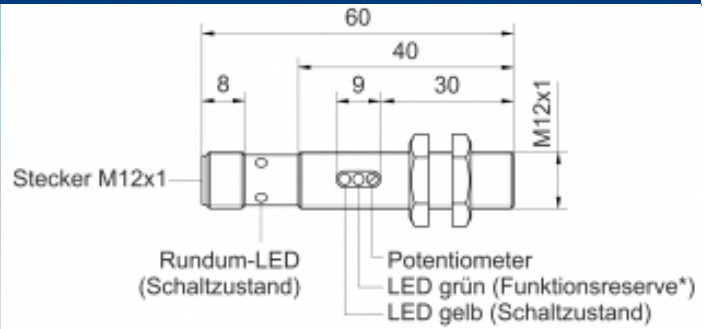
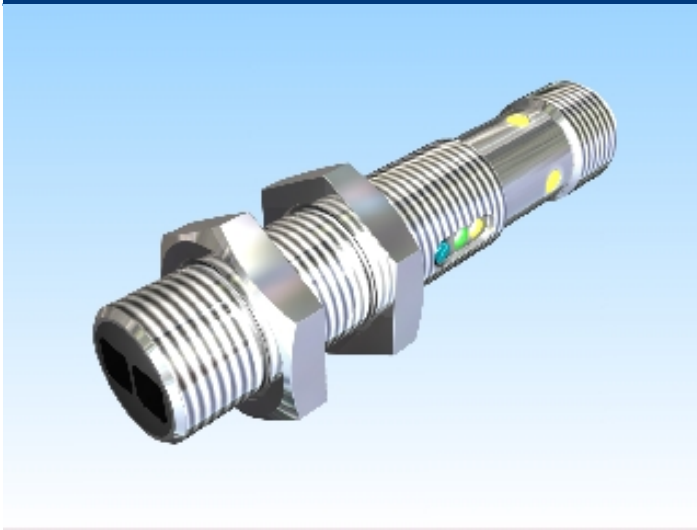





[Article Page](#)

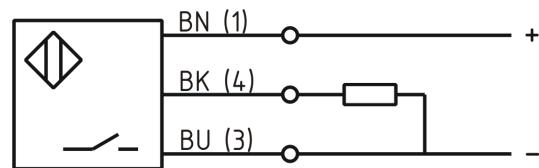
Product Description

reflex light probe



Name	KORT300-M12MB60-DPS-V2-RT
Order number	08361820050
Matchcode	9982-0050
Switching distance	from 300 mm to 300 mm
Switch type	 N.O.
Signal Type	PNP
Illuminant	 Red light 660 nm
Connection	 Connector

Connection diagramm



Dimension (in mm)	M12 x 60
-------------------	----------

Technical Specification

Signal type	Diffuse mode sensor
Operating voltage	10 - 36 V DC
Max. load current	200 mA
No load current	< 15 mA
Switching frequency	1000 Hz
Operating temperature	-25 ° C to 55 ° C
Swiching state	LED
Sensitivity adjustable	ja
Short-circuit proof	yes

Overload protection	yes
Reverse voltage protection	yes
Protection category	IP67
EMC-level	DIN EN 60947-5-2:2008
Termination	Connector M12 4pol

Errors and omissions exceptet