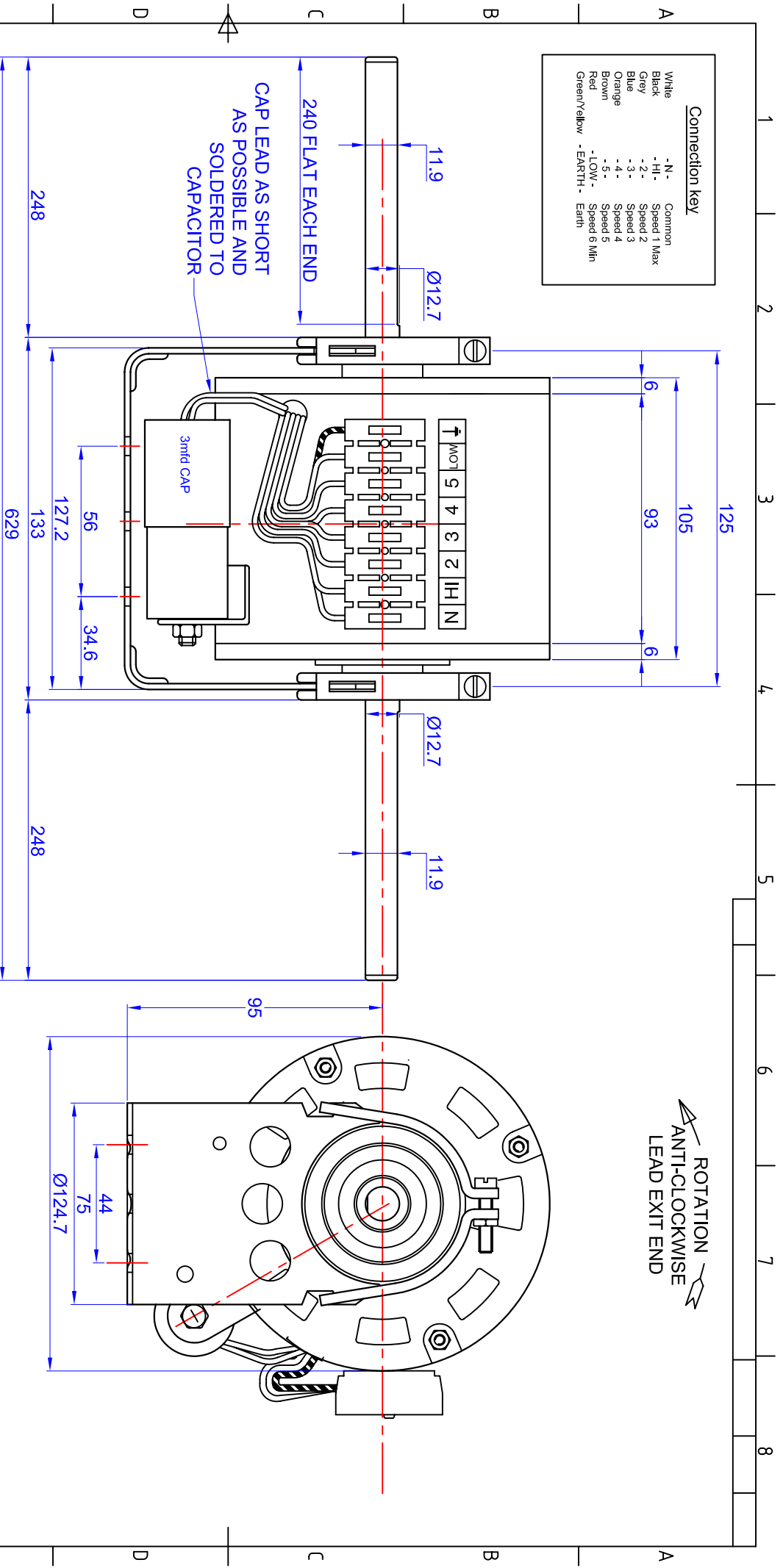


Connection key	
White	Common
- H1 -	Speed 1 Max
Black	- 2 -
Grey	Speed 2
Blue	- 3 -
Orange	Speed 3
Brown	- 4 -
Red	Speed 4
Green/Yellow	- 5 -
	Speed 5 Min
	- LOW -
	Speed 5 Min
	- EARTH -
	Earth



CAP LEAD AS SHORT AS POSSIBLE AND SOLDERED TO CAPACITOR


3mfd CAP

ENCLOSURE - TOTALLY ENCLOSED
BEARINGS - BALL
PROTECTION - AUTOMATIC

REMCO **CE**
Model No. 48-4-100/6DSL
240V - 50Hz - 1300rpm
0.8A - 100W - 3mfd 400V
THERMALLY PROTECTED

REVISIONS:
2: 23.07.04 ENDSHIELD DIMS CHANGED
3: 27.07.04 CAP LEADS NOTE ADDED & MOTOR DIRECTION ARROW CORRECTED

NAMEPLATE DETAILS

J.SOMERVILLE	CHECKED BY	APPROVED BY	48-4-1006dsl.dwg	FILENAME	DATE	27-02-2004	DO NOT SCALE
DRW BY							
 REMCO PRODUCTS LIMITED			48-4-100/6DSL		3.0	1/1	ISSUE SHEET